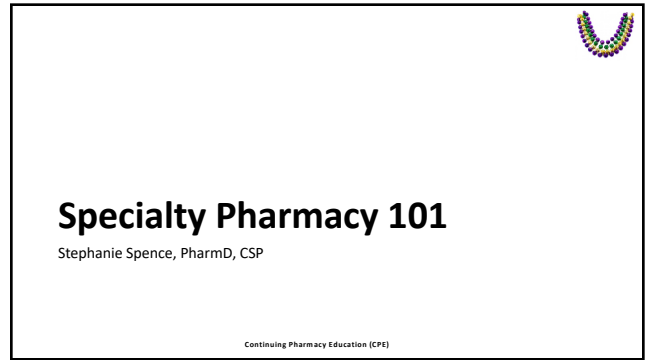


1

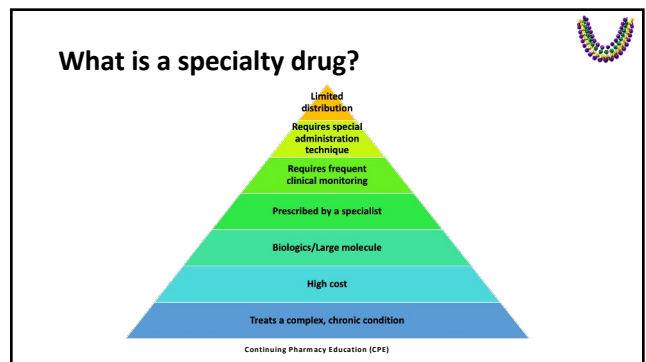


2

Learning Objectives

- Define a specialty drug
- Identify the top 10 specialty drugs and therapeutic classes
- Articulate differences between traditional and specialty pharmacy distribution models
- Define various models for specialty drug utilization management and cost containment

3



4

What is a biologic?

- Complex mixtures
- Produced by biotechnology methods from a living organism or component of a living organism
- Includes a wide range of products such as vaccines, blood products, cells, tissues, and gene therapies
- Can impact natural biologic intracellular and cellular actions

Biologic

Herceptin (breast cancer)
molecular weight = 150,000 daltons

Traditional Drug

Lipitor (hypercholesterolemia)
molecular weight = 350 daltons

5

What is a specialty drug?

- Accounts for 54% of overall drug spend¹ yet represent only 1%-3%² of total prescriptions
- Accounts for more than half of the pharmaceutical pipeline
- \$3,604-\$4,562 per claim³
- \$1,295 per member per year (PMPY)
- 14.2% trend driven by increase in utilization of more specialty drugs used to treat more common conditions (ie: migraines, atopic dermatitis, etc)

6

Specialty Drug Top 10

Top 10 Specialty Drugs

- adalimumab (Humira)
- ustekinumab (Stelara)
- etanercept (Enbrel)
- pembrolizumab (Keytruda)
- infliximab (Remicade)
- lenalidomide (Revlimid)
- secukinumab (Cosentyx)
- eluxacافتor/tezacافتor/ivacافتor (Trikafta)
- dupilumab (Dupixent)
- vendolizumab (Entyvio)

Top 10 Therapeutic classes

- Inflammatory disorders (35%)
- **Oncology (26%)**
- Multiple sclerosis (7%)
- Immunological disorders
- Blood cell disorders
- Lung disorders
- Growth disorders
- Skin-Immunosuppressant
- Enzyme deficiency
- Bleeding disorders

Continuing Pharmacy Education (CPE)

7

Specialty Drug Utilization

Specialty Drug Utilization by Channel

Medical Benefits Utilization by Site of Care

Continuing Pharmacy Education (CPE)

8

Average Cost Per Specialty Claim - By Channel

Channel	2020	2021
Pharmacy benefit	\$4,400	\$4,542 (+4.4%)
Medical benefit	\$2,446	\$2,531
Outpatient hospital	\$2,704	\$2,898
Inpatient hospital	\$5,881	\$5,640
Physician office	\$1,810	\$1,856
Other	\$3,400	\$3,551

Continuing Pharmacy Education (CPE)

9

Knowledge check

Which of the following is a specialty drug used to treat rheumatoid arthritis?

1. methotrexate
2. adalimumab
3. ustekinumab
4. ibuprofen

Continuing Pharmacy Education (CPE)

10

Specialty Pharmacy Distribution Model

Traditional Pharmacy

- Community-based
- Small to large team
- Same-day dispense
- Lowest inventory costs

Specialty Pharmacy

- Central fill/mail order model
- Large team
- 24-hour dispense
- Specialized credentials for clinical management and operations
- Highest inventory costs

Ongoing clinical management

Continuing Pharmacy Education (CPE)

11

Specialty pharmacy clinical management

Patient Care Coordinator

- Excellent customer service skills
- Knowledgeable
- Addresses barriers to specialty drug needs
- Identifies patient care concerns

Clinical Pharmacist

- Experienced training
- Performs clinical reviews
- Conducts clinical interventions
- Facilitates provider engagement

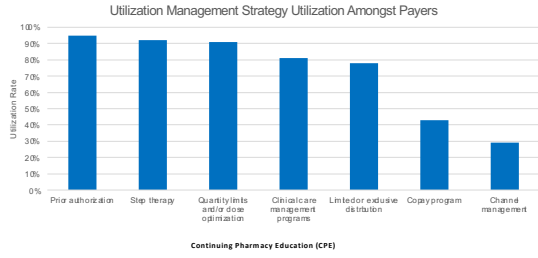
Nurse

- Practice experience with specialty disease states
- Medication administration
- Training in monitoring and triage
- Coordinates infusion services
- Provides adherence coaching when needed
- Supports safe effect modifications

Continuing Pharmacy Education (CPE)

12

Utilization Management Strategies



13

Conclusion

- Specialty drugs are a significant managed care consideration and have numerous attributes, cost being the most significant.
- Specialty drug costs can differ by site of care and distribution channel.
- Specialty pharmacy workflows include specialized services to ensure compliance and medication access.

14

Question and Answer

15

Thank You!

Stephanie Spence, PharmD, CSP

16